



ACCREDITED
CALIBRATION
CERT #2904.01

Western States Calibration maintains A2LA accreditation to ISO/IEC 17025:2005 and ANSI/NCSL Z540-1994-1 for the specific calibrations listed in A2LA Certificate # 2904.01

Special points of interest:

- Learn how you can win a \$25 gift card
- See our holiday schedule
- Save the date!
- Average Turnaround Time

Inside this issue:

- Save the Date 2
- Procedure Changes 2
- Trivia Question 3
- Turnaround Time Graph 3
- Lunch Box Series 4
- Holiday Schedule 4
- Comments/Suggestions 4

Metrology Minute

Volume 1, Issue 5

July 18, 2011

Western States Calibration

Note from the President

At the ripe old age of 19 I worked for a local lumber company as a delivery driver. A couple of years earlier my dad, Don and I had purchased a 67' Mustang which I used to get myself to and from work, to see a girl I later married and to other important places.

Making a few dollars more than minimum wage as a driver, my "needs" were greater than my travels. Inexperienced and nervous, with mustered up courage I met with my leader.

I briefly explained that all of my money was going to fixing and paying for my car and that if I were to save any money I would need a raise.

Wise beyond his ripe old age of about 30 years, he gave me sage advice.

After hearing me out, he asked me what things I did above and beyond my expected work performance. He suggested that if I couldn't identify previous acts, that I should find some things to help the company to merit the raise I was asking for.

Edgar A. Guest wrote:

"I'd rather see a sermon than hear one any day;
I'd rather one should walk with me than merely tell the way;
The eye's a better pupil and more willing than the ear,
fine counsel is confusing, but example's always clear."

As a leader I look for exceptional acts in our team's job performance. There are times when I cannot see a person's sermon/s, although nearly all of the sermons I do hear. More often, the reward for me is seeing the sermon in the great examples of Western States' people.

Employee Spotlight-- TJ Fitzgerald

We would like to introduce you to our newest employee... TJ Fitzgerald. TJ has been working with Western States for a little over a month now in our dimensional laboratory. He feels this job is a perfect fit because he enjoys working with mechanical instruments.

TJ relocated to Salt Lake from North Carolina earlier this year. TJ previously

worked for PIC Group doing quality control.

When not at work he enjoys reading, cycling, and taking hikes. TJ favorite music is pop-folk music, and his favorite movie is Lord of the Rings

We are very excited to have TJ as part of our team!



SAVE THE DATE!

Our Annual Customer Appreciation BBQ is coming up on Friday August 26th, and you will NOT want to miss it!



This year's BBQ is going to be bigger and better than last year! We will have...

- Fabulous raffle prizes
- Time to show our newest capabilities
- A sneak peak at the new website
- Great food
- Music
- Entertainment

Vendors Attending:



Procedure Changes

These are the revision changes that we have had this past quarter.

Document Number	Title	Rev	Issue Date	History
10815	71X Series Fluke Process Calibrators	2	4/6/2011	Updated revision from Fluke.
10971	Chamfer and Countersink Gages	1	6/1/2011	Updated revision from GIDEP. No change to method.
12309	Rules	2	4/21/11	Format change. Added detailed instruction for calibration process and decision rules on what characteristics to calibrate.
13180	Temperature an Humidity Recording Devices	1	4/19/11	Added steps for using the Thunder Scientific Humidity Generator. Formatting and clarification of Method 1 and Method 2.
13180A	Temperature and Humidity Data Loggers	1	4/21/11	Added steps for using the Thunder Scientific Humidity Generator. Formatting and clarification of Method 1 and Method 2.
13188	Infrared Thermometers	1	5/16/11	Added section 4.5 for use of model 4181 IR Calibrator. Other changes relevant to addition of 4181 IR Calibrator.
13278	Crimper, General	1	5/10/11	Added Pull Test to the Calibration Process. Added Pull Test to the Description table and the Spring Tester to the Required M&TE table.

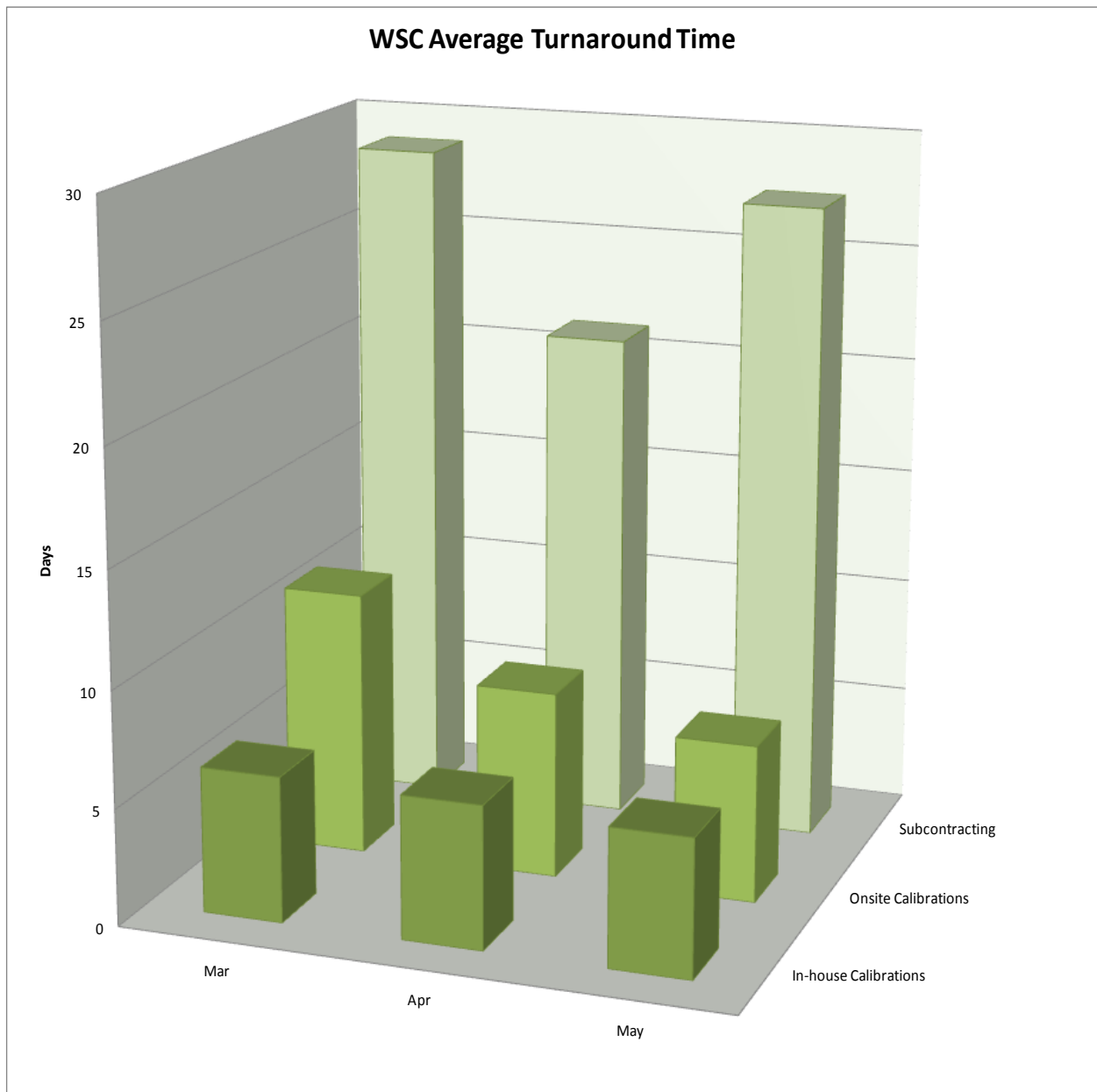
Trivia Question

Question:

When comparing ISO 9001:2000 requirements with ISO/IEC 17025:1999 requirements, for calibration or testing laboratories, one would conclude:

- A) ISO/IEC 17025 is a subset of ISO 9001, similar to ISO 9002:1994.
- B) ISO/IEC 17025 has additional requirements beyond ISO 9001.
- C) ISO/IEC 17025 does not include any of the "hard" ISO 9001 requirements.
- D) ISO/IEC 17025 cannot be compared with ISO 9001.

The first person to email back the correct answer will receive a \$25 gift card to a restaurant of their choice. Please email your answer to meghann@westerncal.com



Lunch Box Series

Date: Friday July 15th

Topic: Coordinate Measuring Machines

Date: Friday September 16th

Topic: To Be Determined

To keep the lunch box series fresh we desire continued feedback from you. Please let us know the topics you would like to discuss and in return our team will gladly present your preferred choices.



Western States Company Holidays



Here are the holidays we have scheduled the rest of the year.

We hope this will be helpful information for you as you consider your equipment in need of upcoming calibration service.

July 25th– Pioneer Day

September 5th– Labor Day

November 24th & 25th- Thanksgiving Holiday

December 23rd– Closed at noon

December 26th– Christmas

December 30th– Closed at noon

January 2nd– New Years

Comments and Suggestions



We want to hear from you!!

This newsletter is created solely to benefit you the customer. We would love to hear your feedback on the information we have provided in this issue. Let us know what you like, don't like, and please let us know any suggestions you have for our next issue.

Everything featured is suggested by customers.

We really appreciate hearing your feedback. We look forward to hearing from you soon.

Thank you for spending a moment to help us better assist you!

Please submit your feedback to meghann@westerncal.com

